

# THE BODY MULTIPLE: ONTOLOGY IN MEDICAL PRACTICE

## ANNEMARIE MOL

Each month the Disability Anthropology Working group, in collaboration with the Ethnography Lab, hosts a reading discussion of an ethnography related to disability. Coffee and snacks provided. All are welcome!

---

February 25, 2 - 4 PM

The Ethnography Lab

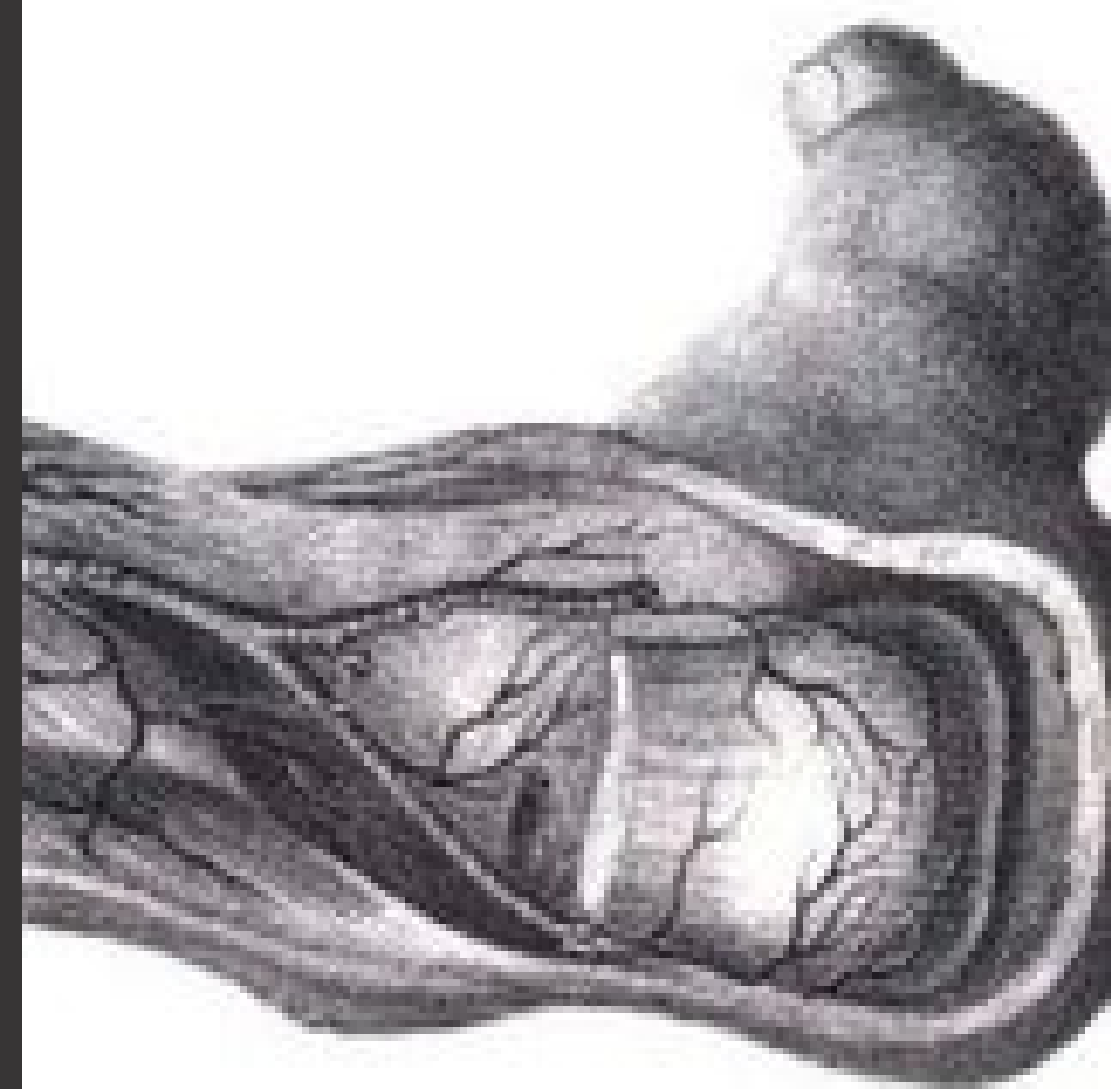
Room 330, 19 Russell St.

[www.ethnographylab.ca/disability-anthropology-working-group/](http://www.ethnographylab.ca/disability-anthropology-working-group/)

The Body Multiple is an extraordinary ethnography of an ordinary disease. Drawing on fieldwork in a Dutch university hospital, Annemarie Mol looks at the day-to-day diagnosis and treatment of atherosclerosis. A patient information leaflet might describe atherosclerosis as the gradual obstruction of the arteries, but in hospital practice this one medical condition appears to be many other things. Mol draws on medical anthropology, sociology, feminist theory, philosophy, and science and technology studies to reframe such issues as the disease-illness distinction, subject-object relations, boundaries, difference, situatedness, and ontology.

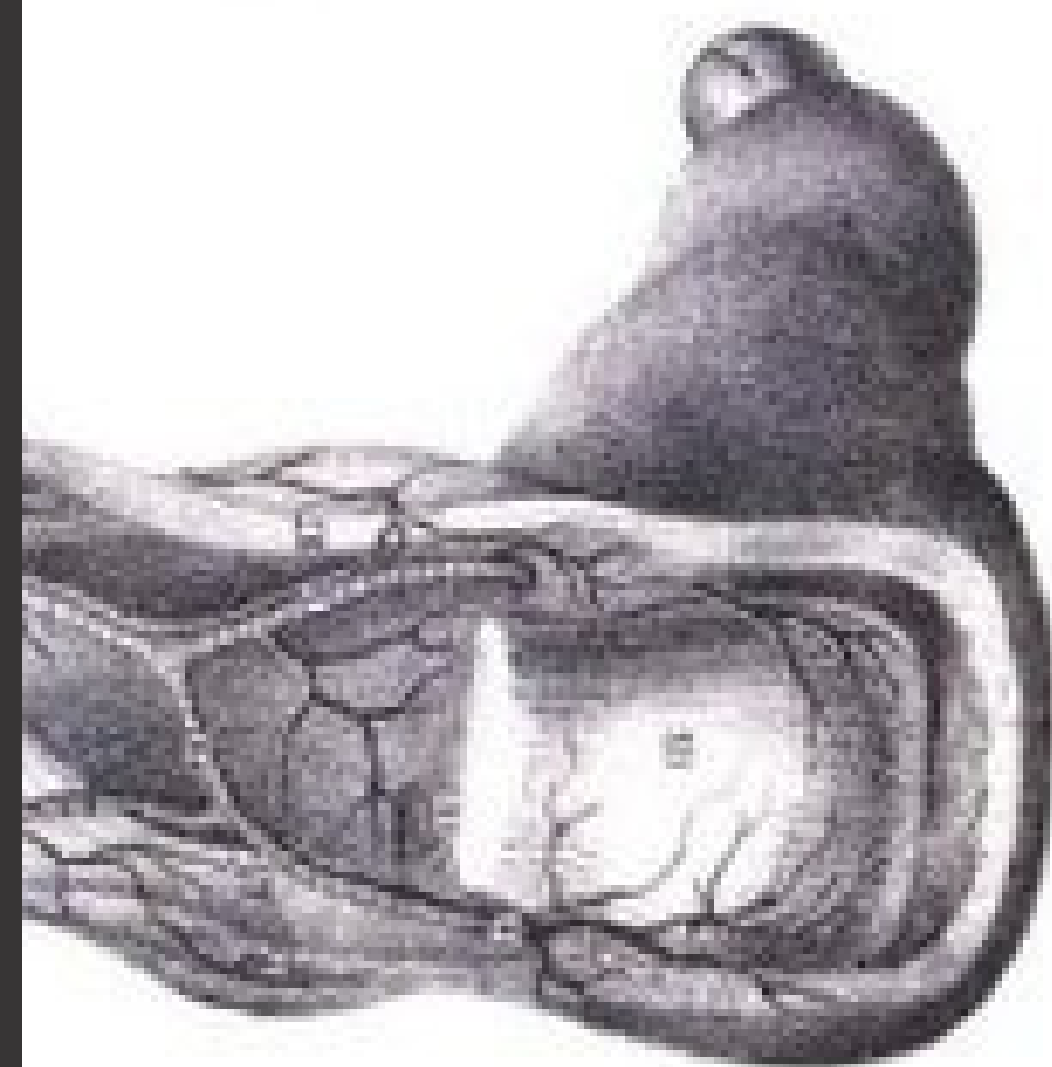
---

rsvp & enquiries: [hannah.quinn@mail.utoronto.ca](mailto:hannah.quinn@mail.utoronto.ca) ,  
[vanessa.maloney@mail.utoronto.ca](mailto:vanessa.maloney@mail.utoronto.ca)



medical practice

annemarie mol



medical practice

### Accessibility Information:

Each of the reading group's proposed books are available as hard copies and e-books through the University of Toronto Library. The Ethnography Lab is located on the 3rd floor of the Anthropology building, at 19 Russell Street, which is accessible via ramp, automatic doors and elevator. Beside the lab there are two all gender bathrooms and one that is wheelchair accessible. Please contact event organizers (left) for accommodation requests.